

TRUSTEE RECRUITMENT INFORMATION PACK



I
H
P
E

Institute of
Health Promotion
and Education

May 2024

A MESSAGE FROM OUR CHAIR - ANGELA TOWERS



Thank you for your interest in joining the Board of the Institute of Health Promotion and Education (IHPE), the only organisation in the UK that is entirely focussed on health promotion and education.

We are currently seeking new Trustees to become actively involved in the strategic direction, governance, and activities of IHPE.

As a Trustee you will join a team that is committed to championing the important, and undervalued, role of health education and promotion in the reduction of inequalities.

Through a range of activities, we provide support for practitioners and have a strong and well recognised voice, lobbying for health promotion to address the wider determinants of health. More information on our activities can be found [here](#).

We also continue to build the evidence base for health promotion and publish our respected and peer reviewed academic journal, the International Journal of Health Promotion and Education. This is now in its 62nd edition and attracts submissions from across the globe, while its usage is also increasing yearly worldwide.

We are a small, engaged and proactive team who are purpose led and who are committed to making a difference. We enjoy working collaboratively across the Board and with other organisations to achieve our objectives. We are currently finalising our forward strategy and new Trustees will have the opportunity to help shape and contribute to our future activities.

Whether you are an experienced Trustee, or are considering your first appointment, we would love to hear from you.

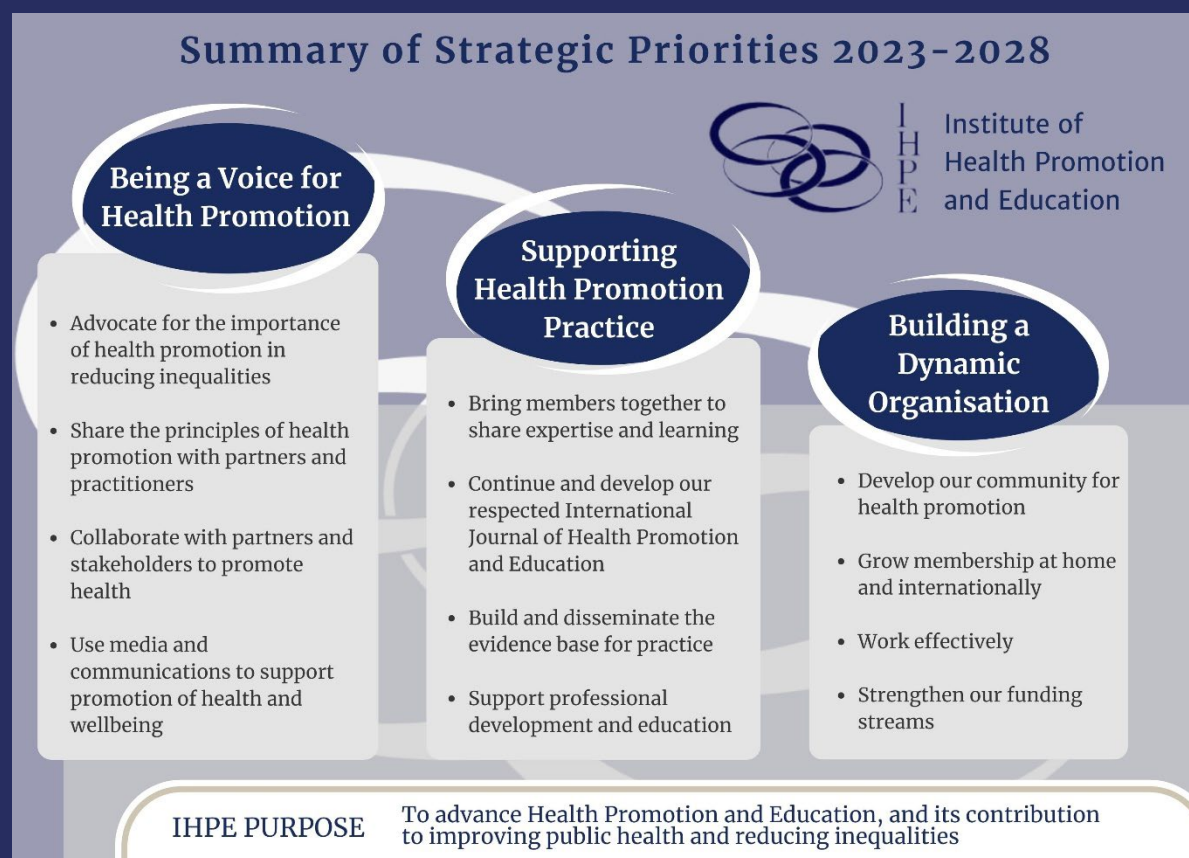
A handwritten signature in white ink that reads "Angela Towers". The signature is fluid and cursive, with a long horizontal line extending from the end of the name.

Angela Towers
President IHPE

ABOUT THE INSTITUTE OF HEALTH PROMOTION AND EDUCATION

The Institute of Health Promotion and Education is a registered Charity and Limited Company managed by Charitable Trustees, each of whom has a proven track record within the field of health promotion and education.

The purpose of IHPE is to advance Health Promotion and Education and its contribution to improving public health and reducing inequalities.



We are a recognised professional association offering Full, Fellow or Associate membership to those engaged in the practice of Health Education and Health Promotion, in countries across the world (subject to qualifications and experience). As an international organisation we recognise the value in sharing good practice and evidence base across countries.

The Institute provides a place to share expertise and experience with like-minded professionals and our official publication, the highly regarded and peer reviewed International Journal of Health Promotion and Education, supports this exchange of knowledge and experience.

JOIN OUR BOARD



Our work is not possible without the skills, knowledge, experience, and input of each of our Trustees.

The Board is chaired by Angela Towers and is comprised of up to 15 Trustees. There are currently no paid employees and admin support is provided by an external organisation. Our current Board members can be found [here](#).

The Board of Trustees ensure that IHPE;

- delivers against a long-term strategic plan and business plan.
- maximises its support for health promotion.
- adopts policies and practices that support its vision and strategic priorities.
- operates in line with its founding principles and complies with relevant legal and regulatory guidelines.

Due to a number of Trustees reaching their maximum term of service, we are looking to recruit up to three Trustees to join our Board. We are particularly interested in strengthening our Board's experience in some key areas and especially welcome applications from individuals with the following skills and experience;

- Health Promotion, Health Education and Public Health
- Charity Board experience
- Marketing and Communications
- Governance and Legal
- Finance

TIME COMMITMENT

Trustees are required to;

- Attend regular Board meetings, approximately one per quarter. These are typically a couple of hours and most of these are held remotely during the working day, though we aim for one face to face meeting per year.
- Join at least one sub committee and be actively involved in at least one area of IHPE's activities.
- Build productive working relationships with other Trustees and with people and organisations with which we collaborate.

TERMS

Trustees are appointed for a three-year term, with a maximum appointment of three terms.

To become a Trustee, you will need to be a full member of IHPE.

APPLICATION PROCESS

Please submit your CV and a covering letter outlining your suitability for the role, together with contacts for two referees. References will not be taken up without your prior approval.

All applications will be treated in the strictest confidence.

An informal call with our Chair can be arranged on request.

Applications and any queries should be sent to admin@ihpe.org.uk

First round interviews will be virtual and held on **19 August 2024**.

Closing date for applications is **15 July 2024**.

THANK YOU

Thank you for your interest in IHPE.

More information on our work can be found at www.ihpe.org.uk

Why not follow us on social media



@InstituteHPE



@ institute-of-health-promotion-and-education